

djeleas

EN

## CONTENT

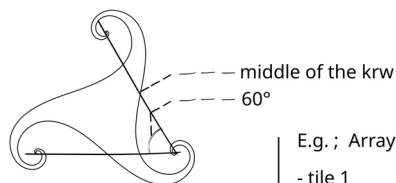
- drawn	tile 02	p2
- A	wind	p3
- A Core	Tracks , Flame Short , Return Active	p3
- LG	ref embryo	p3
- LG	e.g. ; wolf/dog	p4
- LG	bird Core ptesis ( flight )	p5
- LG	bird Core ptesis pulsation	p5
- LG	bird Core ptesis head	p7
- LG	δενδρον Core anthos , Core karpos	p8
- LG	δενδρον Core mushroom	p11
- LG	δενδρον LS vocabulary Aegean , Proust ..	p11
- AE EA	Logs Horror ... , PER , Historia ...	p12
- AE EA	worldmap voc Reclus E.	p13
- SSS	chêne liège “ Dudley Dorito ”	p13

3 kRW at a 60° angle between them . ( ~ the same half-curve than tile 00 )

Then developed by adding three Cores in side view , at their places . ( the Core extends beyond the Edge External of the GT , just to see if the GT fit behind , into the Flame of the Core of the tile next to it ( Just a test , it is not the case . ) . ) .

e.g. ; A bouquet of roses , The 6 sides of the cells of the bees ...

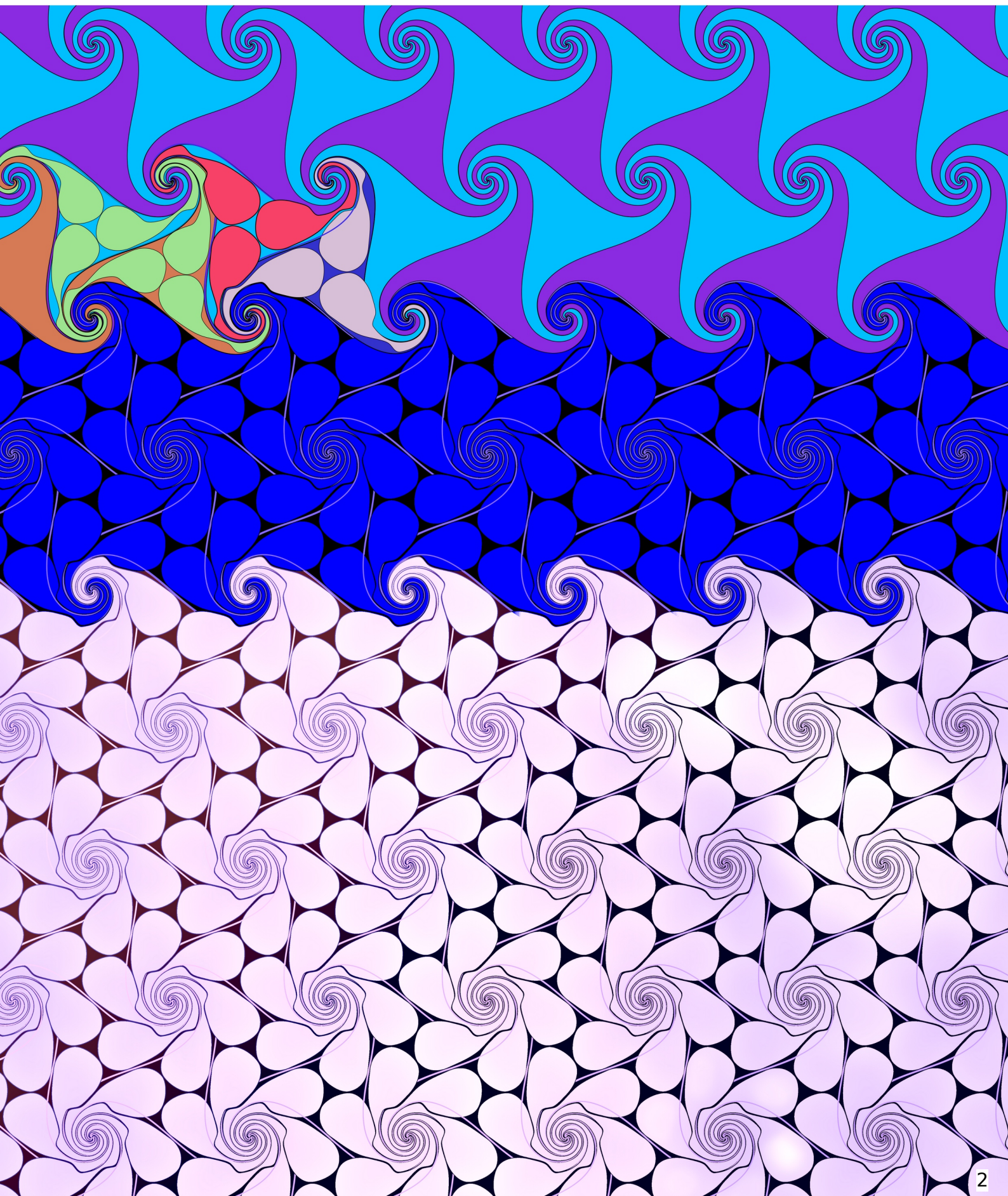
src ; Tile extracted from a 4500-year-old Aegean bowl ( Reference : ' s\_18 ' in the list of <https://orgone.dev/corgone3.php> . ( The ref. ' s\_4 ' and the ' s\_10 ' too have the same design . ) ) . But in their culture , no center of an Aegean spiral wave was extracted in a unique tile . A connection with the Celtic/Breton/Irish ' triskel ' ( ~ symbol ) is possible . But in their culture , no ' triskel ' whatsoever was used as a tileable motif .



E.g. ; Array ;

- tile 1  
"simple translation"  
shift column x -24.41 y 0%  
shift rows x 37.8% y -31.1%

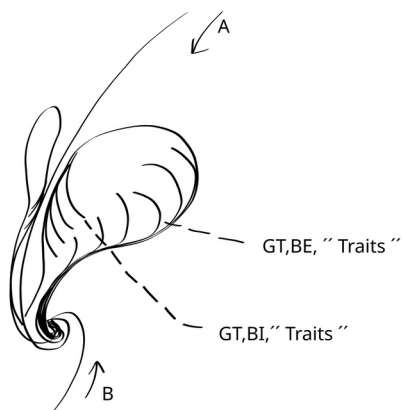
- tile 2  
rotate 60°  
"simple translation"  
idem



A e.g.; wind

Wind; The rhythmed "phase" between the C of an anamole can be heard .  
possibly Invala's body .  
( e.g. ; ~10.22.25 ( when it was blowing in the high plane trees . ) very distinct , brief moment of silence , every ~3/4 of a second . )

A Core Wing W1-W2 BW,EI, " Tracks " , BW,EE, " Tracks "



The BW form some Tracks/Trace/lines/stroke/underscore ;

- The Tracks in Edge External of the Core , made by the EE ( BW,EE, " Tracks " ) , are the Tracks at the beginning of the BW course/path/trajectory , along the EE , which also move towards the Internal while ascending .

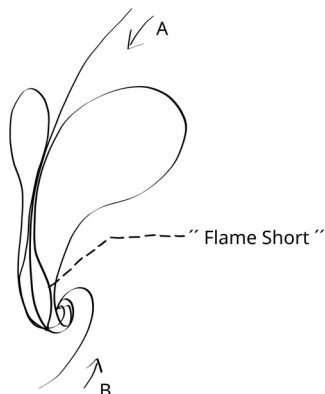
These are ramification of the BW . ( which form little beginnings of BW . )  
( It can form the sort of "veins" along a samarre/samara , the fruit of a sycamore/ pseudoplatanus maple ) .

- The Tracks in Edge Internal of the Core , made by BW ( BW, EI, " Tracks " ) , are the Tracks under the end of the BW course/path/trajectory , along the Flame , which direct back towards the External while descending .

These are ramification of the BW .  
( It can form the dark circles under the eyes . It can form the ribs of an Orgonome . )

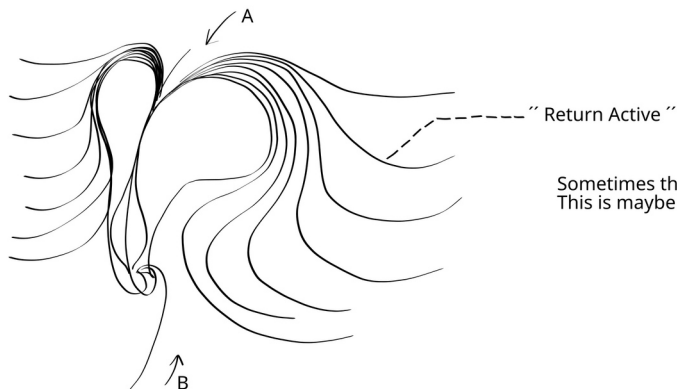
These two Tracks are inverse between themselves and face each other on either side of a Wing .

A Core " Flame Short "



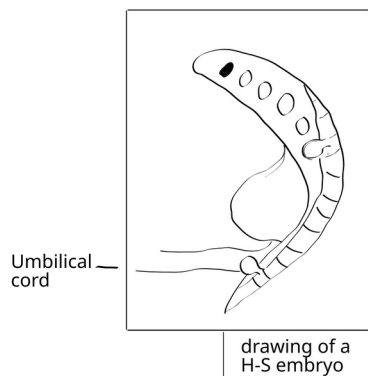
A Flame can be very Short/Small/Slight/little/low compared to the size of the Core and therefore far under the BW . It is always at the Base , nearly at the very bottom .

A Core " Return Active "



Sometimes the Return forms several lines that descend , then ascend again , moving towards the External . This is maybe the AS in a confined medium ( rather than a Return . )

LG ref enigma embryo e.g. ; H-S



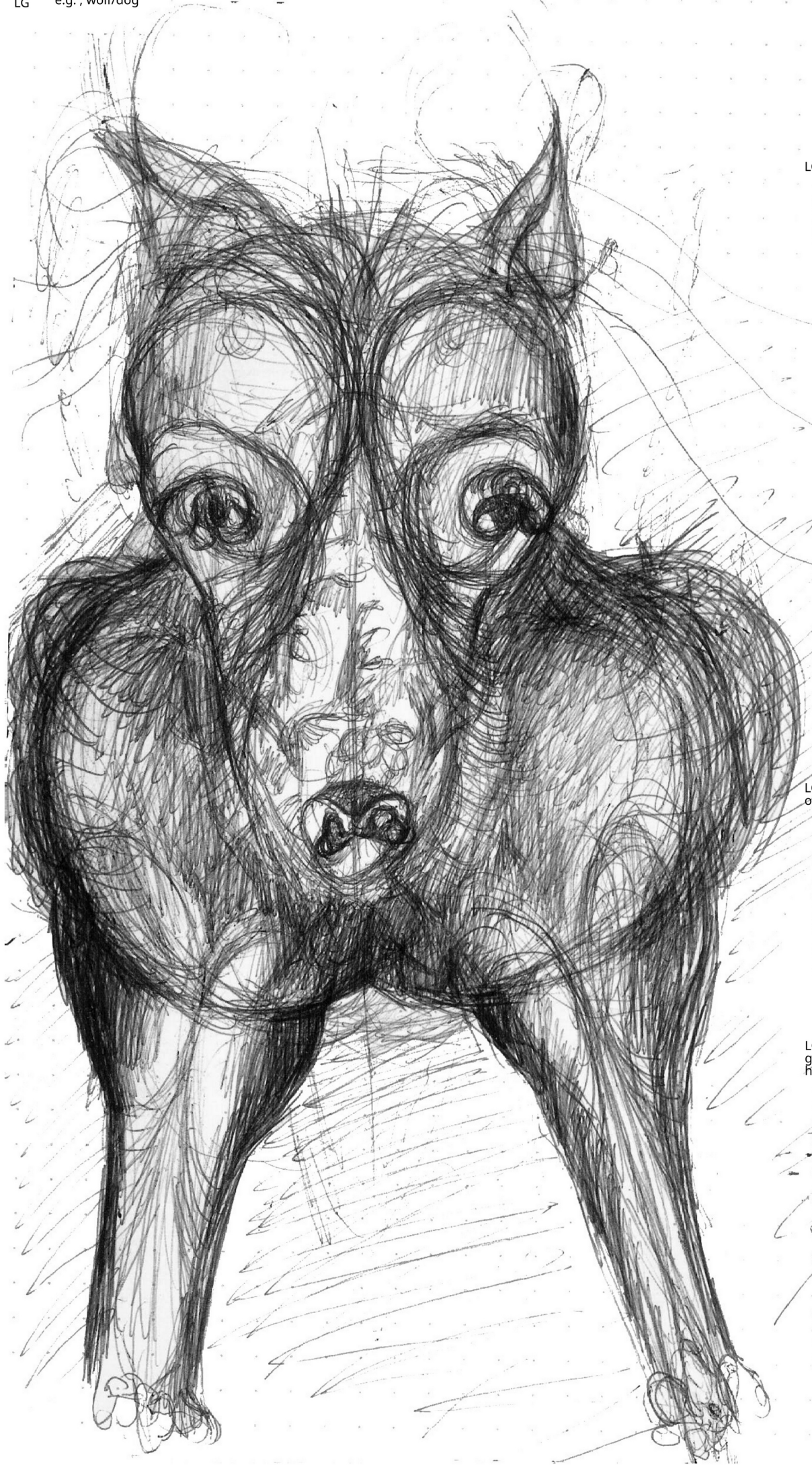
- Eye , black spot/mark aligned with the 4 spheres and at the very end .
- 4 balls that will form ;  
Larynx , lower jaw , nose , and ears .
- " Pallets " hands and feet .
- Segments in the worm at the rear . About 50 visible .
- Tail , which will shrink .

Then the head grows , and forms itself .

LS hymenoptera , weevil , paralysis ... dreadfull

At what was appeared , there's a story about " hymenoptera " that " pierce the nerve centers between the legs of spiders and weevils to paralyze them while keeping them alive and immobile , then lay eggs on them , which will do larvae that will grow inside the spider or weevil . ( LAT ; " Hymen , inis " ; ads of marriage . Hymenaeous ; coupling/mating of animals . ( or ~ " membrane " or ~ "separation" or ~ "notch" . ) . ) . Wasps , bees are hymenopterans . Hymenopteran = ~ 2 pairs of wings beating at the same time .  
( The weevil has a trunk/proboscis . Its trunk and head form a Core , the Base of which is elongated , this is the trunk . )





LG AO ears Flame of a Core

The ear of a wolf/dog , is maybe the Flame of the Core of a mobile Flow B . ( So , there would be an ES at the Base . )  
( AO,skull C4,BW,C1 ears,Flame )

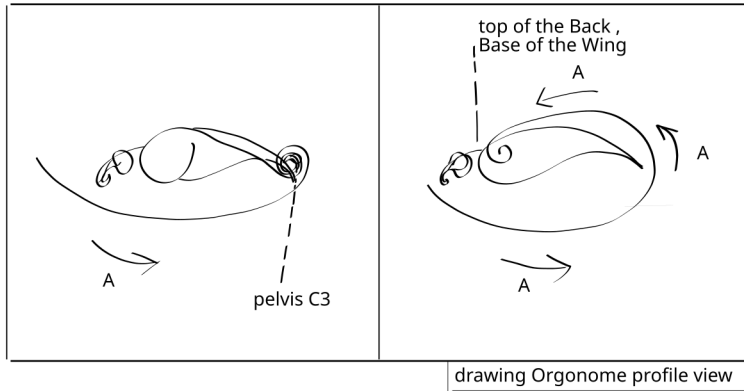
LG AO nose/muzzle C nostrils + N of skull C4

The nose , muzzle , snout , etc. are constituted of the Core nostrils ( AO,skull C4 ,Flame,C0 nostrils ) plus the Nucleus of skull Core 4 ( skull C4,Flame,N ) .  
( the Nucleus is heart-shaped (acute/pointed) , and terminates itself at the very end of the Exit of Superimposition , towards the front, and join the Core nostrils . )  
( On the nose of a H-S , it is visible by the two lines , on either side , that descend to the nostrils . )

LG AO female uber/mamma/ gremium/breast/udder/teat hypothesis

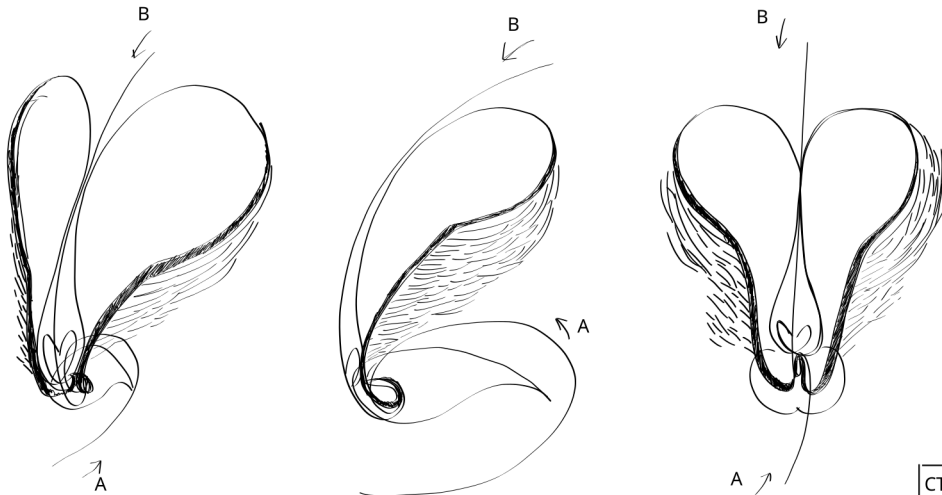
The teat/udder/breast are lower in other species because the female Flow would be truly more precious , difficult to preserve and to make bigger/increase/enlarge without destroying everything else . ( H-S is enough idle/of leisure and immobile , therefore the female Flow in this species would be stronger , therefore the Big Whirls of the Wings of the Core that form the teat/udder/ breast can go further in their path/course/trajectory , that is to say higher . ( teat/udder/breast = female pelvis C4,BW,EE ) ) ( in other species , such as wolves/ dogs , there are more than two teat/udder/breast , is it as many teat/udder/breast that BW of Wings of Cores ? Do they have several female pelvis C4 ? ) .





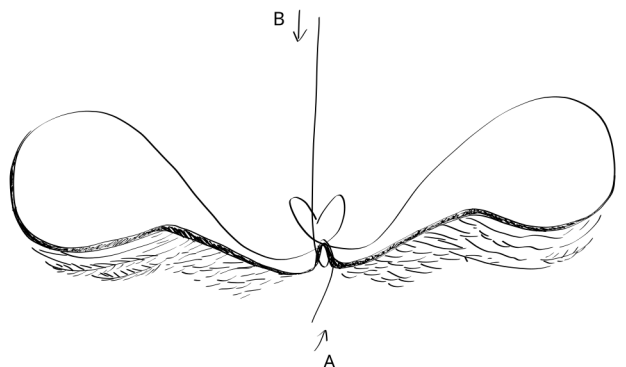
Same drawing than before , but the Base of the Core ptesis ( flight , ( ( FR. ; vol ) , ( LAT. ; volare ; to fly . ) , ( GR. ; πετομαι ; to fly ( birds , ect. ) , f. ; πτησομαι . inf. ; πεσται . postr. ; επτην ; to fly . πτηναι ; which fly . πτησις , εως ( η ) ; flight , what is flying . πτηνος , η , ον ; which fly . πτηνιχ ; able to fly ( with wings/feathers ) . ) . ) is rather the top of the back , just before the nape . ( and it fills the rib cage up to the praecordia . )

After it had pass pelvis C3 , the Sup. ascends along the back to the Wing , where it will Superimpose with a Flow B , which one , due to the large quantity of e. arriving there , will forms a Core , that will pulses rapidly ; These are the bird's wings , the Wing of the Core flight .



CT ( contraction ( A.B )

Sup A.B goes towards the N to form the ES .



( ~4 "rows" of feathers )

DR ( expansion ( A.B ) )

After an ES in the neck and the head , passing through the N .

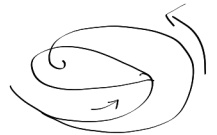
The N ( heart-shaped ) of the Flame is in the Orgonome . ( probably the heart organ on one side , and the spleen on the other . ) )

The head is exactly like an "Anther" of an orchid/ caelogyne . It is an ES of the Core ptesis ( flight ) , whose the curve is opposite to the one of the Sup. ( A.B ) during the Discharge and after .

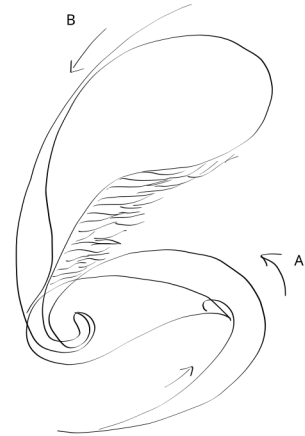
The tail follows the Sup. ( A.B ) , if it is in expansion , the tail is downward , like the Sup. , which is " uncoiled/ unrolled/unwinded "

One morning ~12.12.25 , Friday ( Freya Day ) , around ~08h20 ( GMT+2 ) , dj. was smoking silently next to about ten students , one of whom was directly facing dj. , on the other side of the library's post , waiting that it open . It was about 15 minutes that dj. was there , and again 10 to wait . dj. was looking to the exterior of the corridor , the distant sky . Several groups of birds flew overhead , all this time , some litters , numerous , some gulls . The gulls stayed , and the others too , surprisingly , by sheer/strenght/force , doing and doing again circles above , clearly visible from where dj. was . dj. thought to himself , sadly , that the sort of "break" of their wings , the angle at the 3/4 of their length , dj. could not explain it . Then dj. entered to the library . ~1h , dj. displaced himself from one table to the one in front , then dj. put out the computer . Then , facing dj. , dj. looked better . It was a window , where you could see from above , a wall of the philo room below . There was an acrylic painting of a goose in full flight , it extended its wings very high . So dj. tried one last hypothesis , looking at the painting , it worked . Then dj. took again the last bird drawing and the descriptive text and modified it on the fly . It was good . dj. sent the drawing to ☼ , al , all , chlo .

Pelvis C3 , the tail rises itself , just before a wings charge ( Core flight ) . The A , attracted by the chest ( pelvis C4,AS ( Atrium/Arrival/ praecordia ) is sufficient to detache the Superimposition of Pelvis C3 and ascend again along the back .

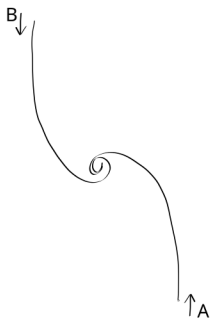


The Flow B arrives at the same place ( Pelvis C4,AS ( Atrium/ Arrival/praecordia ) ) , but from above and the rear ( rather than from below and the rear like the Flow A ) . But this is not the Core of the Flow A , but the Core of the Flow B . The feathers are then disposed/ arranged/layed like the hairs/fur on other Orgonomes , at the External of the Edge External ( EEE ) .



hypothesis 00

neither A nor B contracts  
A and B equal in size ,  
movement , force ...



“ balance ”  
B is equal to A  
A comes from the O  
B comes from the ext.



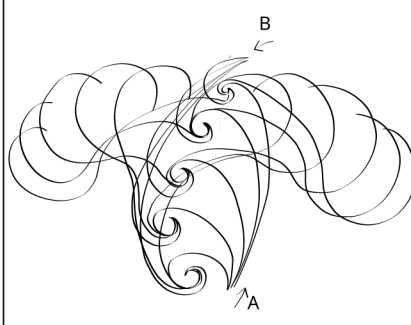
A and B do not move , do not  
contract ,  
Only the Wings of the Core ,  
following the CTDR .  
function/works maybe .

hypothesis 01

A Contract  
B weaker and always equal to itself .



“ imbalance ”  
B weaker than A  
A comes from the O  
B comes from the ext.



A contracted  
= Wings deployed/spread vertically .  
B contracted  
= Wings deployed/spread horizontally .  
function/works maybe .

hypothesis 02

B Contract  
A weaker and always equal to itself .



“ imbalance ”  
A weaker than B  
A comes from the O  
B comes from the ext.  
( e.g. ; in full daylight )



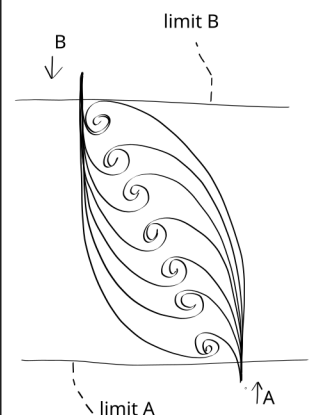
If it is B which contracts ,  
wings deployed/spread horizontally .  
= contraction ( CT )  
Does not function/works .

hypothesis 03

A and B Contract alternately .  
A , then B



A has a CTDR , B has a CTDR .



hypothesis 04

A and B alternate from top to bottom . The distance between their lines varies . The whirls that they form vary . All angles vary . But their end , their common Exit ( ES ) is always stuck/glued together or side by side . This angle of the ES is shown in this drawing . In the case of the Core ptesis , the Exit of Superposition is the bird's head . The position of the head therefore varies with the angle of the ES , that is to say , it varies according to the angle of the meeting point of the Flow A and the Flow B .  
Each point on the middle axis is the Exit of Sup. ( ES = the center of the Superposition ( passing through its Nucleus ) , and the center of the Core . )

The Base of the Core is here , always located just under the meeting point of A and B ( which make an ES ) , this is where there is the Orgonome ( here a bird ) , moving itself in , and by , the Superposition which nourish/feeds the Core ptesis .

The height of the scale is the distance between the starting point of A and the starting point of B .

The Wings deploy/unfold themselves or play/fold themselves following the contraction of the A or B .

In the hypothesis 04 , the Wings , at the time of the Charge and of the Tension ( CT = Contraction ) , are extended upwards , ( that is to say , the BW towards the Flow B ) . They are contained in a limit , fixed at the starting point of B . The Wings , with their BW , cannot go higher , and therefore are forced to descend by stooping themselves , flattening themselves , spreading themselves first horizontally , in width , then , because of the size of the BW which cannot exceed the limit B , approaching again between themselves , vertically , downwards , in the opposite direction between themselves .

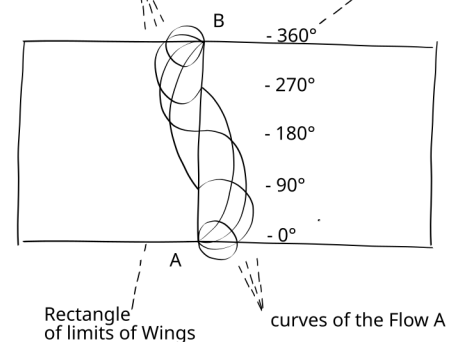
In this drawing the distance between the starting point of A and the starting point of B is the same than the height of the Wings when B is in maximum Relaxation , and the A is in maximum Contraction . That is to say that the Wings are deployed/extended vertically . The size of their width , their wingspan , when the Wings are separated from each other at maximum , is therefore the same than the height doubled , and therefore also the double of the distance between the starting point of A and the starting point of B . The limits of the Wings are therefore here a rectangle , of which the length is equal to twice the height .

The only time when the Wings are played/folded is at the deactivation of the Core ptesis ( Most of the time , by a return of the Flow A to the Core pelvis ) . The Wings , without the Core ptesis , are the BW of pelvis C4 ( chest ) , which it , is then active .

In the hypothesis 04 , Core ptesis is the Core of the Flow B ( because it is in the interior curve of it ) . But it is in Contraction when the Flow B is in Expansion , and the Flow A is in Contraction . The Orgonome , the bird makes an effort , while at the same time the sky ( the B in Expansion ) cheerfully and in a Relaxed way offers it what it needs to fly away itself ( to make the Exit of Sup. , and therefore allow the Discharge .

drawing scale of pulsation hypo. 04

curves of the Flow B



( alternates from top to bottom ,  
each point on the axis is the Exit of Sup. )

Angle of the ES ;

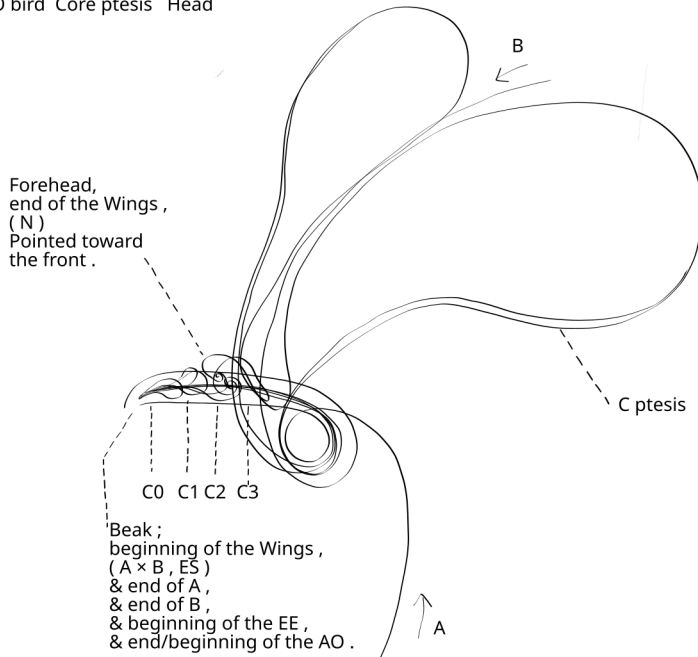
At 0° ; the Flow A of the Sup. is in Contraction . The Flow B of the Sup. is in Expansion . The Core ptesis is in Contraction . The Wings are deployed/Charged/Tensed vertically toward the Top . The bird's head is toward the Bottom . The Orgonome makes an effort .

At 180° ; A and B face each other . ( The ES must be inactive ) .

At 360° ; The Flow A of the Sup. is in Expansion . The Flow B of the Sup. is in Contraction . The Core ptesis is in Relaxation . The Wings are deployed/Discharged/Relaxed vertically toward the Bottom . The bird's head is toward the Top . The Orgonome is resting itself .



LG AO bird Core ptesis Head



C0 ; Tongue

C1 ; Nose/nostrils

C2 ; Eyes

C3 ; Skull

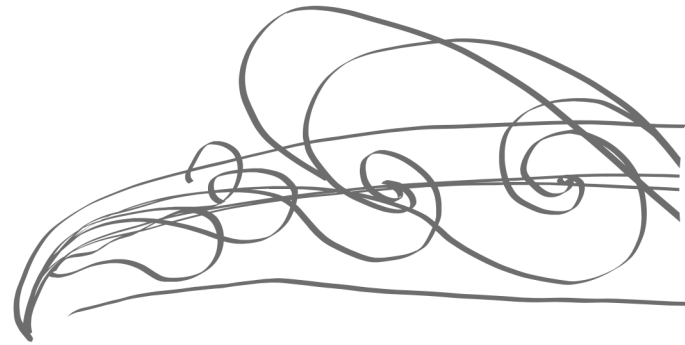
- Nape is where intersect/cross themselves the N,W1-W2 .

- C ptesis makes/forms all the head .

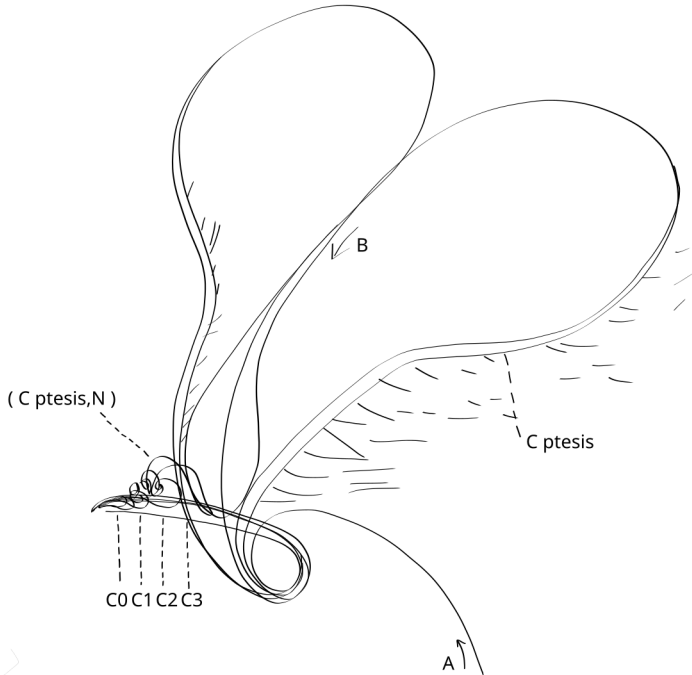
- Head is beginning/end of the AO .  
A and B do not arrive directly at the head but first pass through the body ( praecordia ( AS ) ) .

- C0 , C1 , C2 , C3 are formed from ( C ptesis,ES ) .

- A and B are going to make/form the beak .  
( A is the lower part of the beak .  
B is the upper part of the beak . )  
B is stronger than A  
( visible & logical ) .



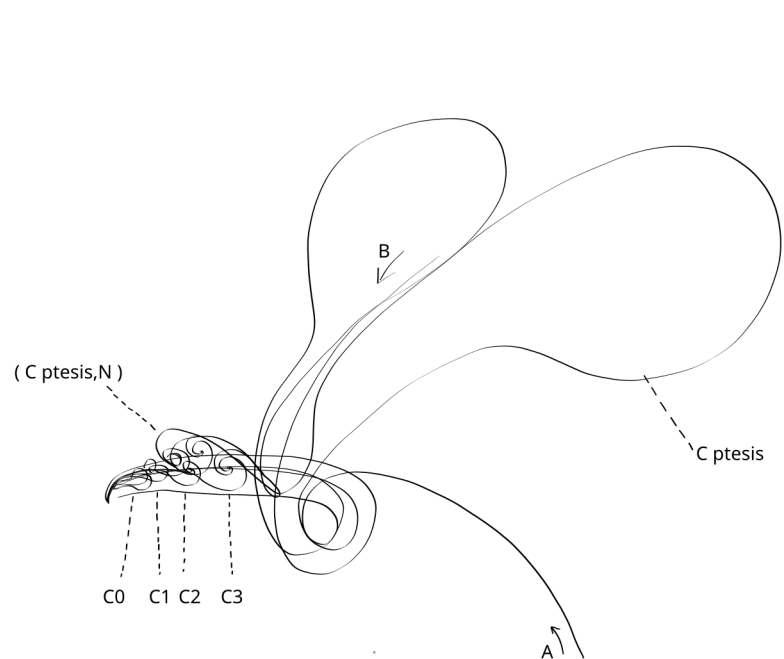
LG AO bird Core ptesis Head eyes



Eyes ; the Bigs Whirls of the Core skull 2 of the Exit of Superposition of the Core ptesis , Superimpose themselves with the Wings of the Nucleus of the Core ptesis of an Anamole of an Orgonome .

$$AO, (( C ptesis,ES,C2,W1-W2,BW ) \times ( C ptesis,N,W1-W2 ) )$$

LG AO bird Core ptesis Head ears



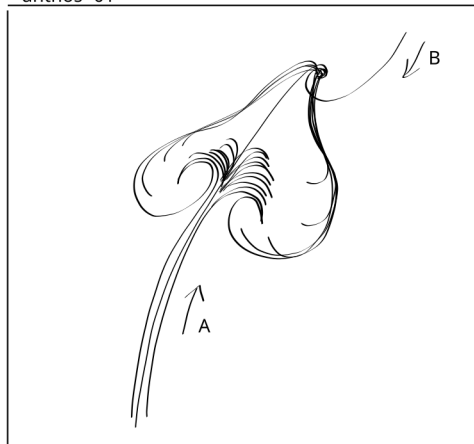
Ears ; the Bigs Whirls of the Core skull 3 of the Exit of Superposition of the Core ptesis , Superimpose themselves with the Wings of the Nucleus of the Core ptesis of an Anamole of an Orgonome .

$$AO, (( C ptesis,ES,C3,W1-W2,BW ) \times ( C ptesis,N,W1-W2 ) )$$

The N of C ptesis is therefore perceived by the ears , before being perceived by the eyes , because it first passes at the rear of the skull , before arriving at the forehead , then to the eyes . The large vibrations in the audio are captured 1st . Almost as if one of the functions of the ears was to calm the Flow of the N of C ptesis , to weaken it , before being able to see it , calmly ( smaller vibrations of the light ) .



anthos -01

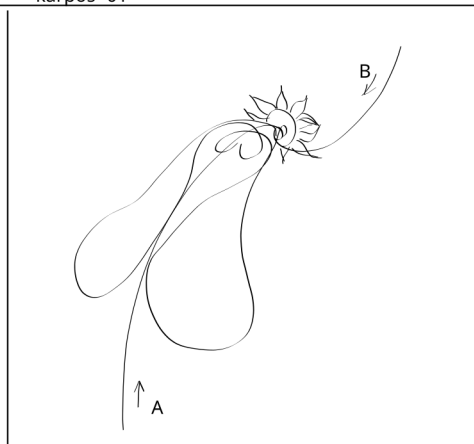


Core of the Flow A ,  
The core is at the exterior ,  
( extended in spring )  
anthos = Flame of the core .

E.g ; Dandelion , Papyrus , Lily , ...  
" waz-lili " of the Aegean ( ~ Papyrus or ~ Lily )

( functions/works . maybe . )

karpos -01



Core of the Flow A ,  
The core is at the interior ,  
( extended in autumn )  
karpos = Flame of the core .

E.g ; Squash , Pears , Apple , ...

( does not functions/works . )

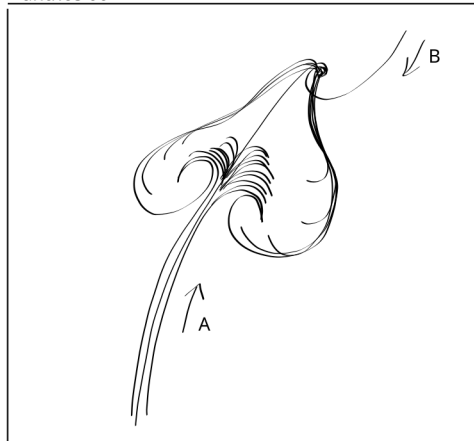
anthos -01 ;

The BW form flower petals , once or several times depending on the plant ( for a dandelion , the Flame is not finished , but is indeed yellow ) .  
The petals curve themselves , following the Whirl of the BW , returning towards the stem if they are long .  
The flower " burns " , consume itself , it is through it that pass first the Flow A , then the Sup. of A and B , then just the B .  
This could functions/work .

karpos -01 ;

The Base of a fruit , the Base of a Core , ( with its N ( the seeds ) ) , is always in the direction of the stem/peduncle ( Flow A ) .  
This is not the case here .  
This does not functions/work .

anthos 00

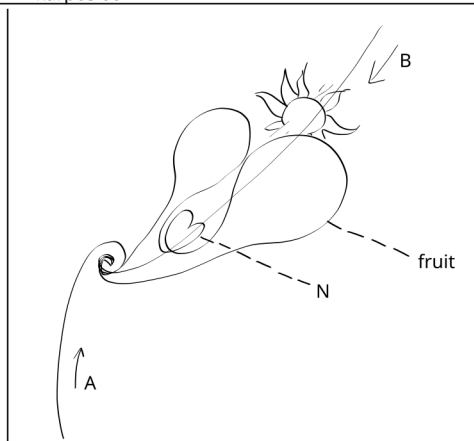


Core of the Flow A ,  
The core is at the exterior ,  
( extended in spring )  
anthos = Flame of the core .

E.g ; Dandelion , Papyrus , Lily , ...  
" waz-lili " of the Aegean ( ~ Papyrus or ~ Lily )

( functions/works . maybe . )

karpos 00



Core of the Flow B ,  
The core is at the interior ,  
( extended in autumn )  
karpos = whole Core .

E.g ; Squash , Pears , Apple , ...

( cornuatus ; functions/works . )

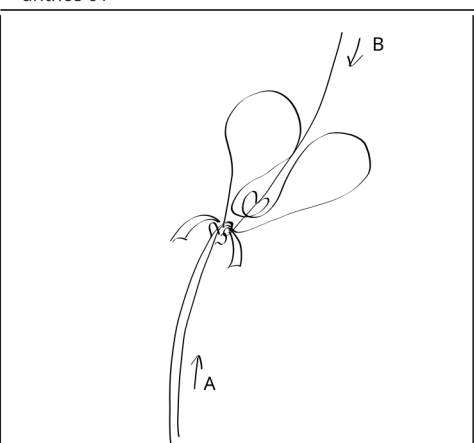
anthos 00 ;

The BW form flower petals , once or several times depending on the plant ( for a dandelion , the Flame is not finished , but is indeed yellow ) .  
The petals curve themselves , following the Whirl of the BW , returning towards the stem if they are long .  
The flower " burns " , consume itself , it is through it that pass first the Flow A , then the Superposition of A and B , then just the B .  
This could functions/works .

karpos 00 ;

Once the Superposition has passed through the flower , it continues the Sup. but under the flower , on the other side . Between it and the stem , there is the fruit , the Core of the Flow B , which grows slowly .  
The passage of the Sup. from the Exterior to the Interior of the plant is a penetration . The A and B were coupled/mated well before ; in spring . It is done itself during the plant's contraction , from summer to winter , the fruit grows in autumn , for a standard , for a single-cycle ( Or it may pulse several times a year , or just in spring , right at the beginning of the year ( e.g ; cherry tree . ) . ) .  
( insects and pollen follow the B and make the Sup. . )  
( moon aids to the extension ( ~ a large mass that attire/attract/pulls/draw toward the top . ) . )  
( spring aids extension ( ~ water evaporates itself with proximity of the sun , ~ a large mass that attire/attract/pulls/draw toward the top . ) . )  
This functions/works .

anthos 01

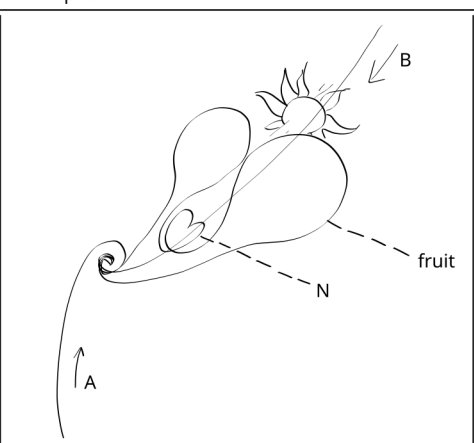


Core of the Flow B ,  
The core is at the Exterior ,  
( extended in spring )  
anthos = whole Core .

E.g . : Poppy , Tulip , ...

( cornuatus ; functions/works . )

karpos 01



Core of the Flow B ,  
The core is at the interior ,  
( extended in autumn )  
karpos = whole Core .

E.g ; Squash , Pears , Apple , ...

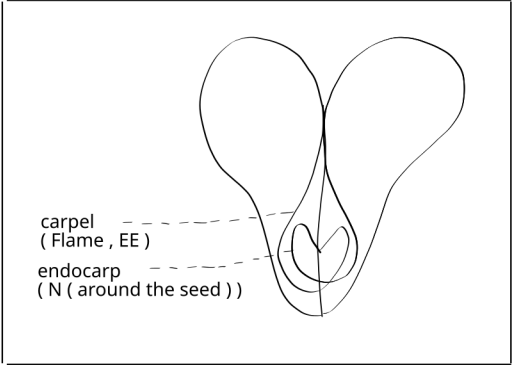
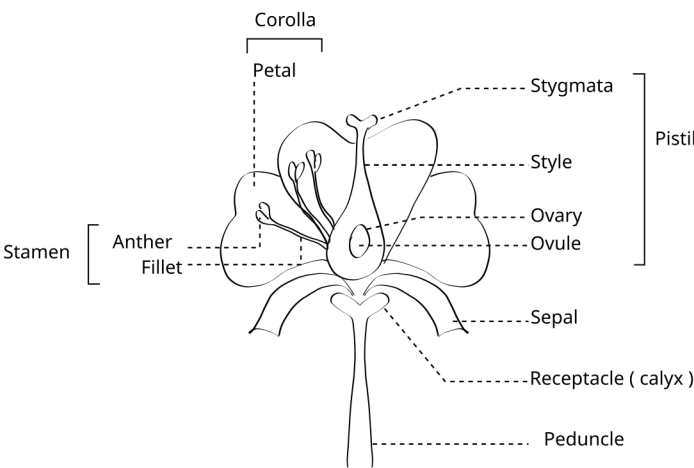
( cornuatus ; functions/works . )

anthos 01 ;

The two Wing ( with their BW ) form the flower petals . The Flame forms the pistil in the middle , whose Base is in direction towards the stem/peduncle ( Flow A ) . Its color is probably in the yellow tones .  
The flower " burns " , consume itself , it is through it that pass first the Flow A , then the Superposition of A and B , then just the B .  
This functions/works .

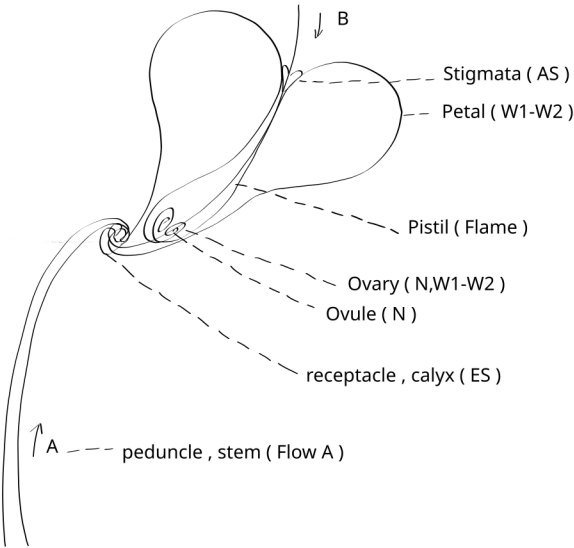
karpos 00 ;

Once the Superposition has passed through the flower , it continues the Sup. but under the flower , on the other side . Between it and the stem , there is the fruit , the Core of the Flow B , which grows slowly .  
The passage of the Sup. from the Exterior to the Interior of the plant is a penetration . The A and B were coupled/mated well before ; in spring . It is done itself during the plant's contraction , from summer to winter , the fruit grows in autumn , for a standard , for a single-cycle ( Or it may pulse several times a year , or just in spring , right at the beginning of the year ( e.g ; cherry tree . ) . ) .  
( insects and pollen follow the B and make the Sup. . )  
( moon aids to the extension ( ~ a large mass that attire/attract/pulls/draw toward the top . ) . )  
( spring aids extension ( ~ water evaporates itself with proximity of the sun , ~ a large mass that attire/attract/pulls/draw toward the top . ) . )  
This functions/works .

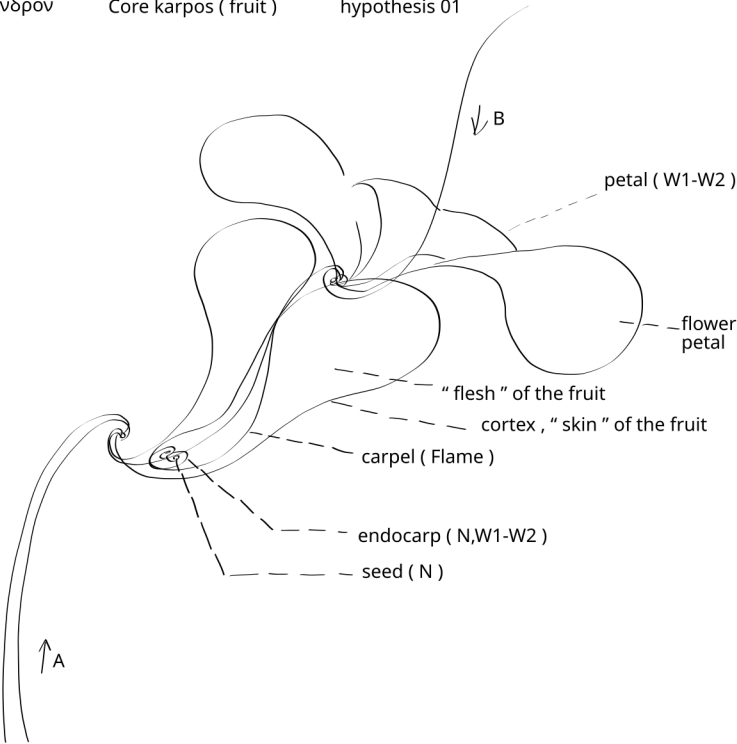


src ; Miscellan  a des fleurs, Anne-France Dautheville, ed. Buchet Chastel .

There are as many cores assembled in a flower , than there are petals ( # and than stamens ? ) .  
Each petal are the two Wings of a Core . ( # each stamen are the Flame of that Core ? ( and the " anthers " are the Nucleus of that Flame ? ) . ) .  
These Cores are around the main Core , the one whose Flame is the pistil , which will open the petals when charged ( by spreading/deploying the Wings with their BW ) , whose Base is on the peduncle ( Stem , Receptacle , Calyx ) which is the Flow A .



The flower forms itself , the petals open themselves . When charged in maximal , the Exit of the Superimposition of Flow A and B is done at the level of the " receptacle " / " calyx " .

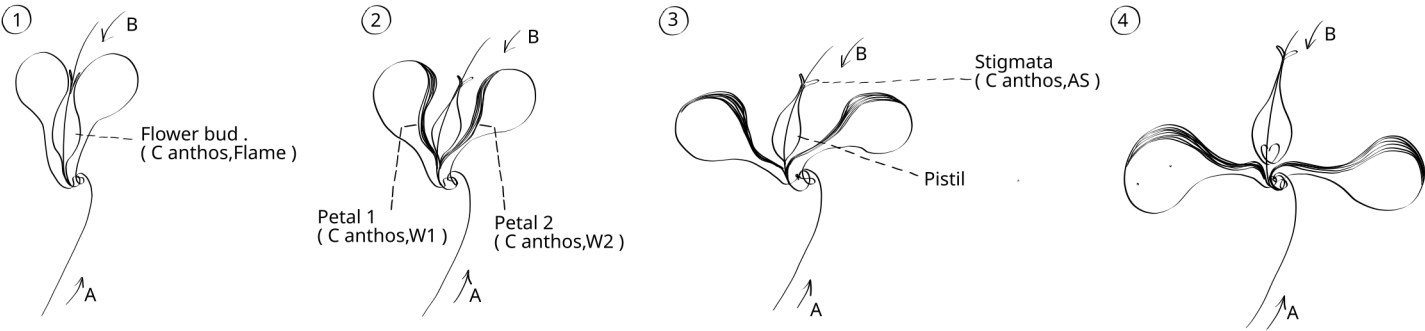


Between the flower , now discharged , and the stem , a fruit begins to grow ( e.g. ; apple , pear , samaras , etc . ) .

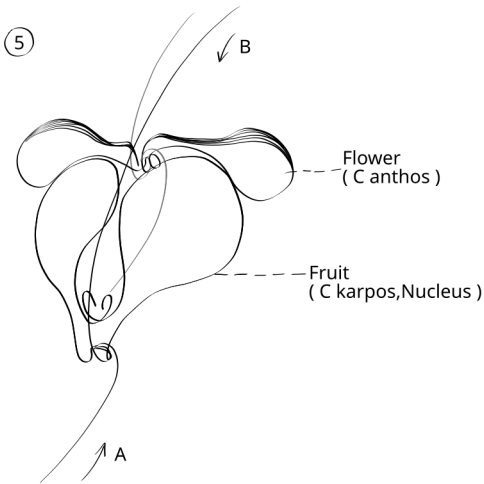
hypothesis probable ;  
- The Superimposition of A and B then creates a new link/linkage/tie/nexus between A and B .  
( a new link/part of a krw/anamole )  
~ Flow B has advanced deeper into the flower .

miss ; stamen , sepals ,

dj. believes that anthos ( flower ) 00 and anthos ( flower ) 01 are both valid depending the species .

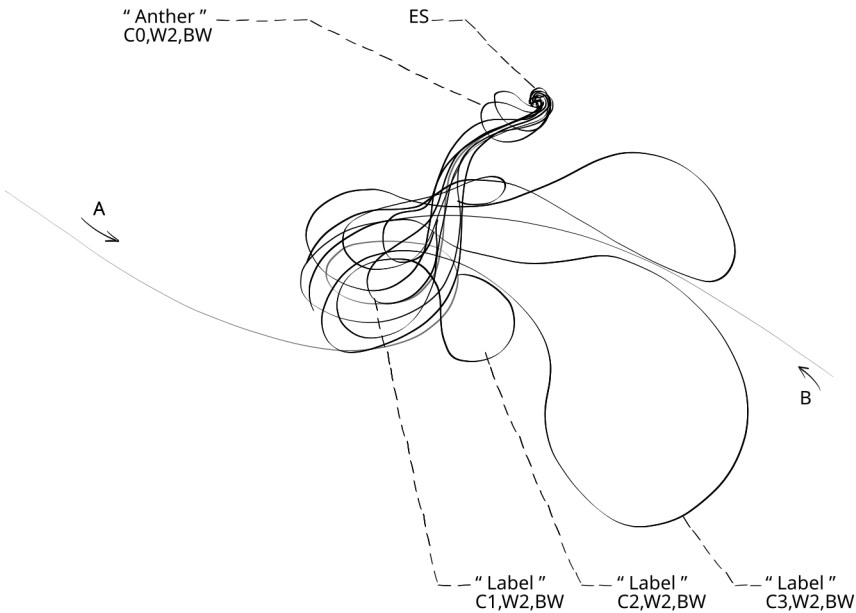


- 1 ; The flower bud ( anthos ) was formed by the growing Core .
- 2 ; The Core begins the Charge , the Wings begin to spread apart , which also spreads apart the Top of the Flame , with the arrival of the Flow B ( AS ) , the flower petals ( anthos ) remain at the Edge Internal of the Wings ( W1-W2, EI ) and therefore at the Edge External of the Flame ( Flame, EE ) , and thus begin to " open itself " . The " pistil " , solid , less flexible than the petals , keeps the initial shape of the Flame , with the " stigmata " as Arrival of Sup. ( AS ) .
- 3 ; Continue .
- 4 ; Expansion maximum , flower open .



- 5 ; Discharge , the Exit of Sup. makes itself , the Nucleus is " fertilized " , the fruit will begin to grow from it ( the " ovaries " ) .

It is missing ; The " stamens " . The " sepals " . The passage of the " ovaries " of the fruit , of the N , under the flower , through the Sup. A.B after the Discharge .



The Cores are in Continuity . The " anther " is the first Core ( C0 ) , then a less visible one along the Flow A ( C1 ) , then the " small wings " on the side of the "label"/petal are the BW of a third Core ( C2 ) , then the largest part of the "label"/petal forms the two Wings of a fourth Core ( C3 ) .

Exactly like the pelvis of the Orgonomes , such as , for example , a male H-S .

Here we can see Core anthos 0 , the " anther " , at the summit/peak of a curve inverted to the spiral curve of the Superposition of A and B .

Exactly like the phallus/clitoris of the Orgonomes , such as , for example , a penis of a male H-S .

It is missing here the upper leaves of orchids/caelogines/phalotruc .. , it is possible that there is a second series of Cores in Continuity on the same flower , but in the direction opposite , that is to say , maybe a female Core anthos .



LG δενδρον Core anthos ( flower ) , Core karpas ( fruit ) hypothesis 01 problem placement of the N

In a fruit ( e.g. ; an apple from an apple tree ) , the N is located at the Base of the Flame , in the Interior of it .

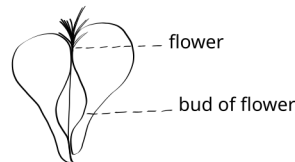
In a fruit ( e.g. ; the samaras of a maple tree ) , the N is located in the EE and EI of the Wings , at the Base , as if External to the Flame .

LG δενδρον Core anthos ( flower ) hypothesis 01 problem top of the Flame e.g. ; dandelion

The flower emerges above the Flame , and maybe than its yellow " petals " do not necessarily have the shape of the Top of the BW .

Nearly as if there were a 2sd Core above the first Core anthos , that would make a new Flame .

Other anthos may be the same than here .

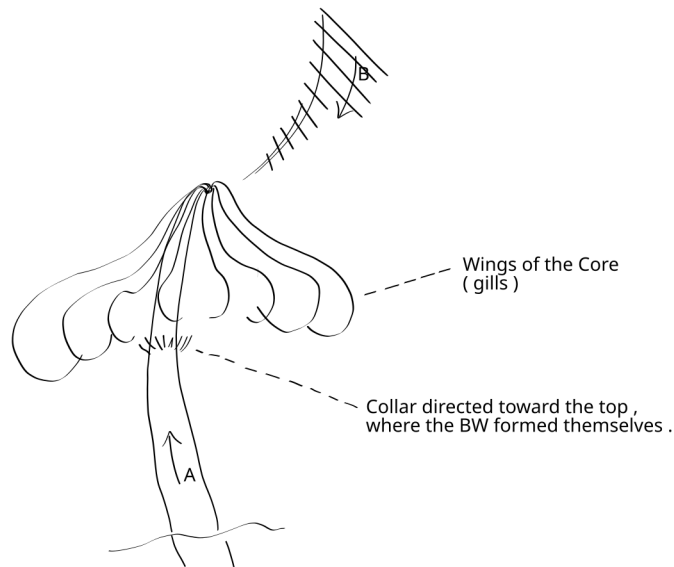


LG δενδρον Core karpas ( fruit ) hypothesis 01 e.g. ; squash, zucchini, pumpkin, cucurbits ...

A zucchini is a core with 2 visible Wings ( like a pear ) . ( C.kr ; the word 'zucchini' in FR. ; ' Courgette ' , has the root ' cor ' )

A pumpkin is a Core with many Wings ( fewer Wings than the Core of a mushroom ( e.g. ; lepiota ) )

LG δενδρον mushroom e.g. ; Parasol mushroom ( ~ lepiota )



This is the same as fruits/flowers at the flower stage . Except that the Core is visible .

A core slowly forms at the tip of a stem . In material ( flexible and white ) the e. rises from the ground , carried by some water , attired/attracked/pulled/drawn upwards ( either by the sun , moon , or a large quantity of e. around ) , there is little wind , otherwise it would be blown away . A stem rises slowly .

There is no Superposition that is made at the top of the stem with a Flow B coming from the exterior ... ( if there are a Superposition that is made , the A curve itself more , the number of Wings is reduced , and they become mobile following the Arrival of the B ... ) .

Then the Flow A begins to form a Core . The e. spreads out in all directions to form the Core with its many Wings ( reaching a certain height , the e. meet/ encounters a density stronger than its own , so it is distributed/spread out in all directions , each Wing makes a gills/lamella ) .

The more the e. of the Flow A Arrives , attired/attracked/pulled/drawn upwards , the more the Core charges itself , thickens itself , lengthens itself , grows , and predominatingly begins to open ( its two or multiple BW move apart one from each other ) . This is the Charge and the Tension ( of the CTDR ) .

The " mushroom cap " ( its Core ) , Charged in maximum , tense , it should produce itself a Discharge and a Relaxation like any other Core , ( such that a jellyfish ) . Could this Discharge and this Relaxation occur during the night ? Or something else ? ( in any case , it would be a motor force and it would be fast and strong ) , but since there is no Superposition with a Flow B , the Discharge and the Relaxation do not seem to be done ( otherwise the mushrooms would also be mobile , and would follow their Flow B ) .

( This is exactly what happens during the explosion of " hydrogen bomb " , " bomb A " " atomic bomb " , " nuclear bomb " . )

LG δενδρον Core anthos ( flower ) , Core karpas ( fruit ) LS vocabulary

flower ; ( LAT. ; flos , oris ; flower . GR. ; ανθος , εως ( το ) ; ( anthos ) flower , what is growing . ( λουλουδι ; flower . ροδον ; rose ) . ALL. ;

die Blüt ; the flower ( Blume , pl ; die Blumen ) . FR. ; fleur . )

fruit ; ( LAT. ; fructus ; fruit . GR. ; καρπος/ου ( ό ) ; ( karpas ) fruit . ALL. ; Früchte ; fruit . FR. ; fruit . )

tree ; ( LAT. ; arbor ; tree . GR. ; δενδρον ( dendron ) ; tree . ALL. ; die Baum ; the tree . FR. ; arbre . )

LG δενδρον Core anthos ( flower ) LS vocabulary e.g. ; Aegean/Minoan Art

"waz-lily" is the common term , in EN. , to describe the paintings of Cores made by the Aegean/Minoan people more than 3500 years ago , mostly on pottery or frescoes . According to " researchers " and archaeologists , it refers to a design combining the flower of a papyrus ( which forms the "head" of the design . " [...] stamen (papyrus head ) [...] " ) and of red lily ( which forms the "petals" of the design . " leaves ( red lilies ) [...] " ) .

In about fifteen books or journals , or summaries of scientific conferences , a word designating a heart shape is mentioned only once .

" But the leaf shape on the garland is not close to the ivy paintings , which are essentially rendered heart-shaped [...] "

Ref ; L' iconographie Minoenne , Peter Warren , Darcque & Poursat , April 22 , 1983 . p194

" [...] harmonies ; the work at the same time conveys understanding of the world of plants , together with a delicate sens of the possibilities of transforming them [...] " , " [...] their stylistic evolution [...] " .

Ref ; L' iconographie Minoenne , Peter Warren , Darcque & Poursat , April 22 , 1983 . p199

" O , mickle is the powerful grace that lies

In herbs , plants , stones and their true qualities . "

W. Shakespeare

LG δενδρον Core anthos ( flower ) LS vocabulary e.g. ; Proust . ref. stamen etc.

src ; À la recherche du temps perdu ( ~ In search for the lost time ) , Marcel Proust , ed. Gallimard , col. Quarto . 1999 . ( livre / Du côté de chez Swann . )

" [...] A sort of Vegetal Kingdom of the atmosphere [...] " .

" Higher up , their corollas opened here and there , with a carefree grace , casually holding , like a final and vaporous adornment , the bouquet of stamens , as fine as the Virgin's threads , which misted them entirely , as if trying to mimic deep within myself the gesture of their efflorescence [...] ( ~ like the head of an f )

" and each flower held , with a distracted air , its sparkling bouquet of stamens , fine and radiant veins in the flamboyant style of stained glass , which blossomed into white flesh of a strawberry flower . "

" [...] invisible and fixed scent , to unite myself with the rhythm that scattered their flowers here and there with youthful cheerfulness , at unexpected intervals like certain musical interludes , they endlessly offered to me the same charm with an inexhaustible profusion , but without letting me delve any deeper , like those melodies that we replay a hundred times in a row without ever penetrating further forward in their secret . I [...] "

" [...] felt [...] as before the white thorns but with greater wonder , that it was not with fake , through some human artifice of fabrication , that the intention of festivity was translated into the flowers , but that it was the nature that , spontaneously , had expressed it with the naiveté of a village shopkeeper working for a resting place , overloading the shrub with these rosettes of a too much tender tone and with a provincial pompadour . "

" A thousand little buds of a paler hue , which , as they half-opened , letting see as if at the bottom of a pink marble cup [...] " .

" [...] a red flame above its greasy , black buoy [...] " ( Describing a Poppy ( C.Flame . )

" [...] would undulate , as numerous , some small heart-shaped leaves , and it is without sadness that I perceived [...] " . " « I have friends everywhere where there are groups of wounded trees , but not defeated , that had close together themselves to implore , with a pathetic obstinacy an inclement sky that has no pity on them . "

" blushing of the indecency of the flowers "

" « This one looks as if it were cut from the lining of my coat » she said to Swann showing him an orchid , with a nuance of esteem for this flower so « chic » , for this elegant and unexpected sister that the nature gave her , so far removed from her in the scale of the beings and yet so refined , more dignified than many women , that she made a place for it in her salon . " ( catleyas [...] in silk , in satin [...] ) .

AE,EA	Logs	Horror	Rain	Volcano	Fire ...
-------	------	--------	------	---------	----------

16.12.25

- **EA,C0,AS × EA,C2,W2,EE,BW,Base (praetermitto)** ;  
Pakistan , Karachi(town)( 87km N.W. ) "and some areas of the Balochistan province " ( 25.52°N,66.55°E )  
H 5.2 00h51 (PST) depht 12km  
<https://tribune.com.pk/story/2582332/52-magnitude-earthquake-reported-in-karachi>  
<https://www.msn.com/en-in/news/world/52-earthquake-hits-pakistans-karachi/ar-AA1SraXY>

- **EA,C0,AS × EA,C2,W2,EE,BW,Base (praetermitto)** ;  
Pakistan , (25.48N, 66.69E)  
H 4.8 01h21(IST) depht 10km "the fifth in a month"  
<https://www.republicworld.com/world-news/pakistan-hit-by-48-magnitude-earthquake-fifth-tremor-in-less-than-a-month>

14.12.25  
- **EA,C0,AS × EA,C2,W2,EE,BW,Base (praetermitto) (anaclasis)** ;  
Nepal "central" , Thoché(town) Manang(district), Gandaki(province)  
H 4.7 12h54  
<https://english.mathrubhumi.com/news/world/47-magnitude-tremor-jolts-central-nepal-no-damage-reported-sirkk8ed>  
<https://www.msn.com/en-in/news/news/mild-earthquake-hits-central-nepal-s-manang-district/ar-AA1SknT5>

11.12.25  
- **EA,C0,AS × EA,C2,W2,EE,BW,Base (praetermitto) (anaclasis)** ;  
Tibet (33.33N,86.82E)  
H 4 05h54m51s (IST) depht 10km  
<https://www.msn.com/en-in/news/India/earthquake-of-magnitude-40-strikes-tibet/ar-AA1S812e>

" Tsonyi county of Naggu city in Southwest China's Xizang " (32.95N,88.65E)  
H 5 depht 10km  
<https://www.chinadaily.com.cn/a/202512/12/WS693b5380a310d6866eb2e35a.html>

05.12.2025  
- **EA,C0,AS × EA,C2,W2,EE,BW,Base (praetermitto)** ;  
Pakistan , ( 34.52°N, 72.46°E )  
H 3.6 10h39m (IST) depth 40 km  
<https://www.republicworld.com/world-news/pakistan-hit-by-48-magnitude-earthquake-fifth-tremor-in-less-than-a-month>

04.12.25  
- **EA,C0,W1,BW,EI ;**  
Xinjiang , (41.10N,78.61E)  
H 6.2 13h14m07s (IST) depth 10 km  
<https://www.msn.com/en-in/news/world/earthquake-of-62-magnitude-hits-china-epicenter-is/ar-AA1RHqDD>  
<https://news24online.com/world/china-earthquake-6-2-magnitude-quake-rattles-xinjiang-aftershocks-expected/680723/>  
<https://www.msn.com/en-in/news/world/6-2-magnitude-earthquake-jolts-china-s-xinjiang-region-no-casualties-reported/ar-AA1RKCAd>

- **EA,C0,AS × EA,C2,W2,EE,BW,Base (praetermitto)** ;  
Xinjiang , ( 41.13N,78.40E ) " Akqi County close to the Kyrgyzstan border " , " in Kizilsu Kirgiz autonomous prefecture, Xinjiang Uygur autonomous region " , " around 813 km from Urumqi, Xinjiang's regional capital. The average elevation within a 5-kilometer radius of the epicenter is around 2,557 meters. "  
H 6.0 15h44(local time) (07h44 GMT) depht 10km  
<https://www.reuters.com/business/environment/magnitude-60-earthquake-strikes-chinas-xinjiang-region-2025-12-04/>  
<https://www.chinadaily.com.cn/a/202512/04/WS69319937a310d6866eb2cf18.html>  
<https://www.jagonews24.com/en/international/news/87682>

30.11.25  
- **EA,C0,AS × EA,C2,W2,EE,BW,Base (praetermitto) (anaclasis)** ;  
Nepal , Bayjang , Sudur , Saipal(mount)  
H 4.4 , 12h09 (local time)  
<https://www.msn.com/en-in/news/world/44-magnitude-earthquake-strikes-western-nepal-province/ar-AA1RqZ7N>

- **EA,C0,AS × EA,C2,W2,EE,BW,Base (praetermitto) (anaclasis)** ;  
India , Uttarakhand , Chamoli ( 30.19 °N,79.48°E )  
H 3.7 10h27m07s (IST) , depht 5km

<https://www.hindu.com/news/national/uttarakhand/earthquake-of-magnitude-37-strikes-uttarakhands-chamoli-district/article70341126.ece>

- **EA,C0,AS × EA,C2,W2,EE,BW,Base (praetermitto) (anaclasis)** ;  
Tibet , Yuksom , Sikkim ( 28.05°N,87.76°E )  
H 3.0 depht 10km  
<https://www.aninews.in/news/world/asia/earthquake-of-magnitude-30-strikes-tibet20251130081948/>

25.11.2025  
- **EA,C0,AS × EA,C2,W2,EE,BW,Base (praetermitto)** ;  
Pakistan , ( 36.54°N,72.02°E )  
H 4.3 02h27m17s (IST) depth 120 km  
<https://www.republicworld.com/world-news/pakistan-hit-by-48-magnitude-earthquake-fifth-tremor-in-less-than-a-month>

22.11.25  
- **EA,C-1,F,C0 ;**  
Irak  
H 5 8h29 (UAE) , depht 30km  
<https://www.msn.com/en-ae/news/middleeast/uaes-ncm-records-50-magnitude-earthquake-in-iraq/ar-AA1QX10n>

21.11.2025  
- **EA,C0,AS × EA,C2,W2,EE,BW,Base (praetermitto)** ;  
Pakistan , ( 36.12°N,71.51°E )  
H 5.2 03h09m12s (IST) depth 135 km  
<https://www.republicworld.com/world-news/pakistan-hit-by-48-magnitude-earthquake-fifth-tremor-in-less-than-a-month>

20.11.2025  
- **EA,C0,AS × EA,C2,W2,EE,BW,Base (praetermitto)** ;  
Pakistan , ( 35.02°N,71.63°E )  
H 3.9 17h19m20s (IST) depth 10 km  
<https://www.republicworld.com/world-news/pakistan-hit-by-48-magnitude-earthquake-fifth-tremor-in-less-than-a-month>

14.11.25  
- **EA,C1,W2,EE ;**  
Pays-bas N. Zeerijp(village)(near) , Delfzijl(10 km. W. of )  
H 3.4 01h16 (00h16GMT) " The tremor is the third-strongest ever measured in Groningen and the most severe since a 3.4-magnitude quake struck Westervliet in 2019. The strongest recorded quake in the province measured 3.6 in Huizinge in 2012 "  
<https://www.aa.com.tr/en/europe/magnitude-34-earthquake-hits-northern-netherlands-strongest-in-years/3743727>

12.11.25

Aegean(sea) , Chypria(island) ( 20km N.E. ) , Paphos(town)  
H 5.3 11h32(9h32gmt) , depht 15km  
<https://greekcitytimes.com/2025/11/13/cyprus-earthquake-november-2025-paphos/>  
<https://www.independent.co.uk/news/world/europe/cyprus-earthquake-pathos-tremors-magnitude-b2863709.html>  
<https://www.devdiscourse.com/article/science-environment/3694584-cyprus-tremor-shakes-the-mediterranean-a-seismic-event-without-casualties>

03.11.25  
- **EA,C0,AS × EA,C2,W2,EE,BW,Base (praetermitto) (anaclasis)** ;  
Afghanistan (N.)  
H 6.3 ~ 01h (local time) , depth 28 km , 20 deads 300 injured , " [...] The state-run energy company DABS [...] lost power after electricity lines from Uzbekistan – a major supplier of power to Afghanistan – were severed. [...] total blackout "  
<https://abcnews.go.com/International/wireStory/powerful-63-magnitude-earthquake-shakes-northern-afghanistan-127115988>  
<https://www.cbsnews.com/news/afghanistan-6-3-magnitude-earthquake/?tag=YHF4eb9d17>  
<https://ktvz.com/news/national-world/cnn-world/2025/11/02/multiple-casualties-feared-after-powerful-magnitude-6-3-earthquake-strikes-northern-afghanistan/>

e++  
<https://www.brecorder.com/news/40389787>  
<https://www.straitstimes.com/asia/south-asia/no-resolution-as-afghanistan-pakistan-end-peace-talks-in-istanbul-sources-say>  
<https://www.kgou.org/world/2025-10-31/pakistan-and-afghanistan-agree-to-maintain-a-ceasefire-for-now-heres-what-to-know>

02.11.25  
- **EA,C1,W2,EE ;**  
UK (country) , Britain , Wales ( N.W. coast of ) ,

Rhosneigr(town , " in the Irish Sea " ) ( 5.6 miles (9km) SouthWest of )  
H 0.4 7h55 depht 17km " Looking back only two months ago, a 0.7 magnitude tremor was also recorded in Bannau Brycheiniog National Park at Llangyndir. Powys has been particularly active this year with at least six tremors recorded in the county in the past three months."  
<https://www.msn.com/en-gb/news/newsbirmingham/earthquake-strikes-off-uk-coast-as-tremor-recorded-by-experts/ar-AA1QrmR2>

28.10.25  
- **EA,C0,AS × EA,C2,W2,EE,BW,Base (praetermitto) (anaclasis)** ;  
Pakistan , Balochistan (N.)  
praetermitto cloud inval/sss  
" Rare Lenticular Cloud Formation Over Quetta  
A lenticular cloud formation was observed in the early morning of Oct 28, 2025, over Koh e Murdaar - eastern range of Quetta city. The cloud appeared before sunrise, persisted for approx. 20 minutes, and dissipated just prior to sunrise "  
<https://www.dawn.com/news/1951777>  
<https://www.msn.com/en-in/news/world/ufo-missile-or-just-some-natural-phenomenon-mysterious-rainbow-glow-over-pakistan-goes-viral/ar-AA1PtNJV>  
<https://www.msn.com/en-in/news/world/what-s-up-in-pakistan-rare-colourful-clouds-ufo-missile-test-rumours-stun-quetta-residents/ar-AA1PoVos>

27.10.25  
- **EA,C2,W2,EE ;**  
Turkey , Balikesir(province) , Sindirgi(town)  
H 6.1 22h48 (local time) (19:48 GMT) depth 5.99 km  
<https://www.msn.com/en-us/public-safety-and-emergencies/natural-disasters/magnitude-6-1-earthquake-hits-western-turkey-causing-buildings-to-collapse/ar-AA1PijfI>  
<https://www.nytimes.com/interactive/2025/10/27/world/middleeast/earthquake-turkey.html>

21.10.25  
- **EA,C1,W2,EE ;**  
Scotland , Glen Lyon(region) , Pubil(ville), Perth(ville), Kinross(ville) (near)  
H3.3 08.25 (BST ,07.25 UTC) , depht 3km " The BGS says it detects between 200 and 300 earthquakes each year in the UK, with only 20-30 strong enough to be felt by the public. " , " "I was in bed and felt my bed roll and shake for one second, and my wardrobe doors were vibrating. It felt like a fast train going past. " "  
<https://www.msn.com/en-gb/news/other/earthquake-hits-uk-as-loud-rumbling-reported/ar-AA1OPg6d>  
<https://www.msn.com/en-gb/news/newsscotland/scotland-hit-by-three-earthquakes-within-minutes-as-houses-shake/ar-AA1OOTX7>

07.06.1931  
- **EA,C1,W2,EE ;**  
UK (country) , Britain  
" the largest known British earthquake hit near the Dogger Bank - a large sandbank in a shallow area of the North Sea about 100 kilometres (60 miles) off the east coast of England. "  
H 6.1 ( " Based on magnitude, here are the 10 strongest earthquakes felt in the UK, according to the BGS: North Sea (Dogger Bank) - 7/6/1931 - 6.1 Dover Straits - 6/4/1580 - 5.8 Dover Straits - 21/5/1382 - 5.8 Channel Islands - 30/7/1926 - 5.5 Llyn Penin, Wales - 19/7/1984 - 5.4 Channel Islands - 17/2/1927 - 5.4 Derby - 11/2/1957 - 5.3 Hereford - 17/12/1896 - 5.3 Caernarfon - 9/11/1852 - 5.3 Market Rasen, Lincs - 27/2/2008 - 5.2 " )  
<https://www.msn.com/en-gb/news/newsmanchester/uks-biggest-earthquake-the-day-a-61-magnitude-earthquake-struck-the-north-sea/ar-AA1Rlc4o>

1650  
Aegean(sea) , Santorini ( Terra ) (island)  
H  
<https://greekreporter.com/2025/11/11/kalogeroi-islands-greece-mysterious-explosion-vanish-monastery-treasures/>

epr nclr/bomb 27.11.25  
- EA,C-1,F,C0 , EA,C0,AS × EA,C2,W2,EE,BW,Base (praetermitto) ;  
Kirgistan " [...] Kyrgyzstan is exploring the possibility of building its first nuclear power plant [...] "  
<https://www.world-nuclear-news.org/articles/kyrgyzstan-considering-possible-russian-smr-plant>

- EA ;  
epr nclr/bomb anti 21.10.25  
" George Orwell [...] "  
<https://www.yahoo.com/news/articles/atom-bomb-george-orwell-1945-121325334.html>

AE,EA historia civil. collapse , plague , archaeology ...

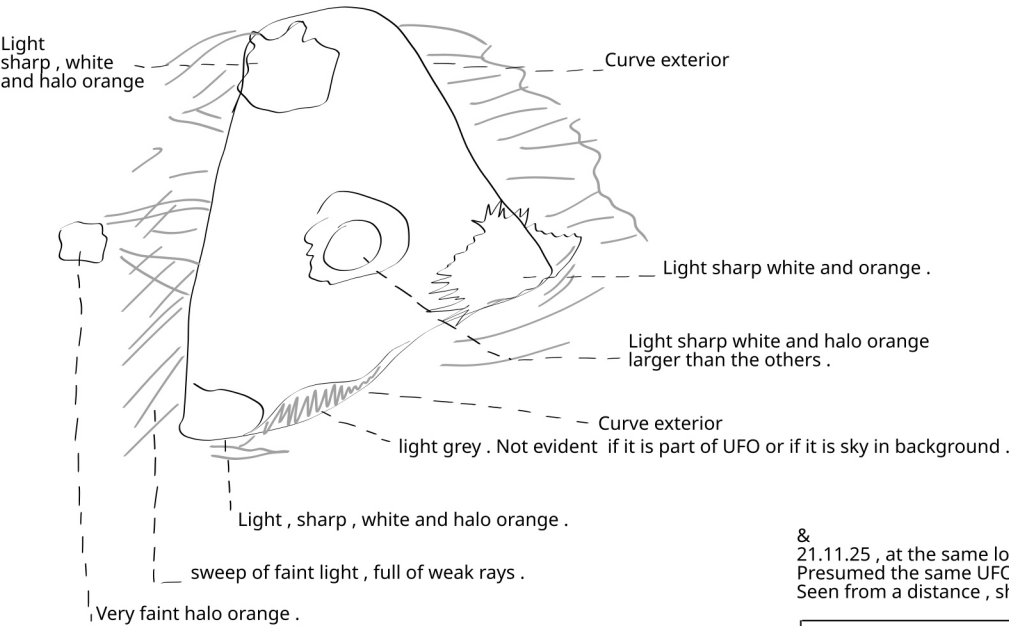
05.12.25  
- EA,C0,AS ;  
<https://www.msn.com/en-us/news/other/unknown-volcano-eruption-claimed-as-cause-of-black-death/ar-AA1RIBzX>  
<https://www.msn.com/en-us/weather/topstories/a-volcanic-eruption-may-have-catalyzed-the-plagues-arrival-in-europe-study-suggests/ar-AA1RISqi>

14.11.25  
- EA,C0,AS ;  
Issyk kul (lac) , " [...] 15th century [...] "  
<https://www.ancient-origins.net/news-history-archaeology/submerged-medieval-city-kyrgyzstan-00102305>

epr technocracia , Vocabulary e.g. ; Elysée Reclus  
' [...]   
~ engineers take possession of ;  
industrialism ,  
administrations ,  
banks .  
[...] '  
  
(" progrets , régrets " , FR. commentary in book pau a p4 )  
( « progrets , régrets » , FR. commentary dj. )

AE,EA world map , Vocabulary e.g. ; Elysée Reclus  
" With projected degrees " ( FR. ' À degrés projetés ' ) , " receding perspective " ( FR. ' perspective fuyante ' )

SSS chêne liège " Dudley Dorito "  
11.2010 Britain , West midlands , Tipton(town) , " near the merry hill shopping centre in dudley .  
3× between 2012 and 2013 , & in 2008 & in 2009 .



&  
21.11.25 , at the same location .  
Presumed the same UFO .  
Seen from a distance , sharp light .

